



Northwestern REC
PO Box 207
Cambridge Springs, PA 16403

Presorted
First Class Mail
US Postage Paid
Permit No. 32
Cambridge Springs, PA

Contacts:

- Amy W. Fuller**
News from the REC Editor
1.814.398.5364
- Mary Mulligan-Haines**
Communications/Marketing Manager
1.814.398.5307
- Marilyn Jones**
Engineering & Operations Supervisor
1.814.398.5310
- Linda King**
Business Development Manager
1.814.398.5303
- Rich Wunderley**
Engineering/Field Services Superintendent
1.814.398.5366

Located one mile south of Cambridge Springs in Crawford County on Highway 86, the 77 acres are zoned Commercial and Light Industrial by Cambridge Township.

CALL 1.800.472.7910

~ for more information ~

- 13 - three to eight acre lots (11 available)
- Many lots "SHOVEL READY"!
- All lots front on public roads.
- All lots served by municipal sewer & water.
- Roadways and sewers completed.
- National Fuel gas lines readily accessible.
- Three-Phase electric supply available on each lot.

Cambridge Business Center

NO TAXES UNTIL 2013
Real property, Earned
Income, Net Profit,
Business Privilege or
Gross Receipt

KEYSTONE OPPORTUNITY EXPANSION ZONE

May 2003



NEWS

from the REC

A Touchstone Energy Partner

The Northwestern Rural Electric Co-operative Association, Inc.
PO Box 207, Cambridge Springs, PA 16403-0207

www.northwesternrec.com • E-mail: northwesternrec@northwesternrec.com • Phone: 1.800.472.7910 • Fax: 1.814.398.8064

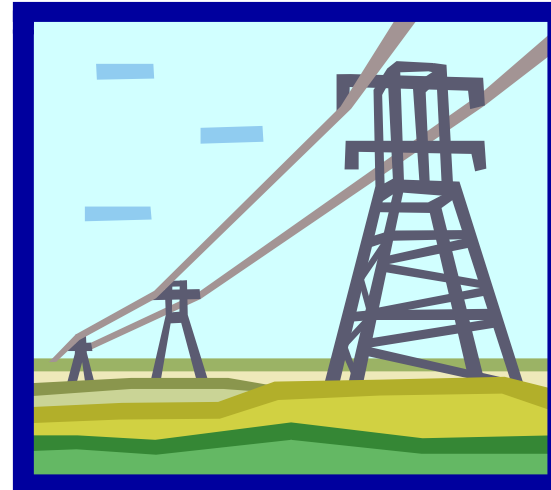
"Be Alert for Peak Alerts" Returns

Once again, Northwestern REC and other co-ops on the PJM (Pennsylvania, New Jersey and Maryland) transmission grid, are initiating the "Be Alert for Peak Alert" program. This program is designed to inform co-op members when weather conditions (hot summer days) are right for electric demand to be high. The desired outcome is for many members to voluntarily limit their electric consumption during these peaks to help control future power costs for the entire membership.

On the PJM transmission grid, power costs for the up-coming year are based on the five highest peak days that occur in the current year. Because the grid includes summer peaking cities such as Philadelphia and Baltimore, these peaks will usually occur between the months of June and September.

Can You Help?

Even if you are not a member of Northwestern REC you can help. As a member, you can participate during a peak alert by limiting your electric load at home or at



work as described later in this article. As a business working with Northwestern REC members, you can promote the "Be Alert for Peak Alerts" program to the members. The following information will help you answer member questions.

What is a Peak Alert?

A *Peak Alert* is a radio or e-mail notification to inform Cooperative members of a predicted period of high demand for electricity, asking them to voluntarily cut back their energy consumption. For now, we are using Froggy, 100.3 WHUZ, 107 and KISS 99.3 radio stations to broadcast the alerts. For e-mail notification, messages can be sent to mmh@northwesternrec.com.

When will a Peak Alert usually occur?

The alerts will usually occur in the summer months be-

(Continued on page 3)

Inside this issue:

Be Alert for Peak Alerts Returns	1 & 3
Electrical System Grounding	2
Co-op Happenings	2
News from Engineering	2
National Safety Month.....	2
Home Repair Loans & Grants.....	3
Cambridge Business Center.....	4
Contact Information.....	4

News from the REC is published quarterly by the Northwestern Rural Electric Co-operative Assoc., Inc.

Co-op Happenings

66th Annual Meeting

Northwestern REC will hold its 66th Annual Meeting on Saturday, August 2, 2003 at the Crawford County fairgrounds. Displayers are welcome - contact Mary Mulligan-Haines at 800.472.7910 for more information. ♦

News from Engineering

Engineering Investigation Fee

In April 2003, the Northwestern REC Board of Directors approved a new engineering fee. This Engineering Investigation Fee, which went into effect on April 30, 2003, will be charged for all requests for new and/or changes in service.

For residential and seasonal accounts, the fee is \$50 and will be applied to the hook-up charges if construction begins within six months. Exceptions will be reviewed by NREC on a case-by-case basis. Commercial accounts will be charged \$75.

Each year, the Field Services Department receives hundreds of requests to design and quote new or changes in service. The Engineering Investigation Fee was created to cover the expense of such requests, many of which never begin construction.

For more information, please contact Rich Wunderley, Engineering/Field Services Superintendent, at 800.473.3567. ♦

Updated Service Drawings

Northwestern REC recently updated all of its service drawings. These sketches include the meter location for Co-op members, making it easier for contractors to meet Code requirements. To obtain a free copy of these drawings, please contact Engineering/Field Services at 800.473.3567. ♦



June is National Safety Month

Four words:

Knowledge.

Know the issues, the risks and the responses.

Action.

Make plans. Be prepared for any emergency.

Dedication.

Be a role model. Make safety a priority.

Community.

Engage co-workers, family and neighbors.

Source: National Safety Council - www.nsc.org

Electrical System Grounding

Contributed by: Rich Wunderley, PE

Grounding is critical in all electric systems. A good grounding system will limit over voltages due to lightning strikes, line surges or unintentional contact with higher voltages.

These three potential sources of over voltage can and do cause extensive damage on the utility distribution system or on the residential/commercial building electrical systems. Installation and maintenance of a low resistance grounding system can minimize damage from these over voltage sources.

Northwestern REC is performing a system wide grounding study scheduled to be completed this fall. The study will provide information on the overall ground resistance across the distribution system. Northwestern REC will evaluate current grounding installation methods based on the resistance readings.

We recommend that electrical contractors review their current grounding practices. Installation and maintenance of a good grounding system can enhance safety and minimize damage to equipment. ♦

(Continued from page 1)

tween June and September. Typically, they will occur between 10 AM to 6 PM on hot summer days. Even though it may not be hot in our particular area, it may be much warmer in other parts of the regional power grid where the cooperative purchases energy.

Why is there a Peak Alert program?

Northwestern REC is having a *Peak Alert* program to reduce energy purchased during high demand periods, which will control future generation power costs for all members.

Is there a power shortage in our area?

No! Our generation supplier, Allegheny Electric Cooperative of Harrisburg, PA, works diligently to assure that we have an adequate supply of electricity. Northwestern REC is asking members to voluntarily curtail electric use when a *Peak Alert* is issued. One could say that the alert is a "price signal" not to buy electricity when it is at a higher price.

How can we reduce our electric use?

When a *Peak Alert* is issued, reduce electric use by:

- Set air conditioners to 78 degrees or use fans
- Close curtains and blinds to keep things cooler inside
- Operate washers, dryers, dishwashers, stoves and other major appliances in early morning or evening
- Turn off any non-essential lights
- Run pool pumps at night

By 6 p.m. the peak will pass and members can go back to normal use. If the *Peak Alert* announcements are missed, simply limit electric use on the hottest afternoons of the summer.

What are the benefits of participating?

The Cooperative's future price it must pay for electric generation has a component based on how much we consumed during summer peak demand periods. Voluntary participation will have long lasting effects on the cost of power during 2004. It's the collective benefit of the "cooperative way".

For more information regarding Peak Alerts, please contact Mary Mulligan-Haines, Communication/Marketing Manager, at 800.472.7910, or send an e-mail to mmh@northwesternrec.com. ♦

Home Repair Loans & Grants

The United States Department of Agriculture offers low interest loans to very low-income homeowners for repairs and improvements on their homes. Loans are only available to the homeowner and must be used for the dwelling occupied by the owner.

The loans are offered at 1% interest with a maximum term of 20 years. If the loan is for \$7500 or more a mortgage will be required.

Eligibility:

- Favorable credit history. There is no charge for a credit report.
- Liquid assets are considered and may affect the loan amount.
- Applicants must show a dependable source of income.
- The property must be owned and occupied by the applicant. Documentation required.
- Applicants with an outstanding federal judgment will not be determined eligible.

Property Eligibility:

- Must be modest in size and design.
- Cannot have an in-ground swimming pool.

Some grants are also available to very low-income homeowners 62 and older who are unable to repay a loan.

Equal Credit Opportunity Act Notice:

"The Federal Equal Credit Opportunity Act prohibits creditors from discriminating against credit applicants on the basis of race, color, religion, national origin, sex, marital status, age (provided that the applicant has the capacity to enter into a binding contract), because all or part of the applicant's income derives from any public assistance program; or because the applicant has in good faith exercised any right under the Consumer Credit Protection Act. The federal agency that administers compliance with this law is the Federal Trade Commission, Equal Credit Opportunity, Washington, DC 20580"

Contact Barry E. Miller, USDA, at 814.336.6155 ext. 110 for more information. ♦